



DON'T PANIC IN A PANDEMIC

EDUCATIONAL MATERIAL USE POLICY

The accompanying material is intended for the use of PUR-O-ZONE representatives and customers. The contents are copyrighted, and use by other organizations without written consent, is prohibited.

THE INFORMATION CONTAINED IN THIS PRESENTATION IS DEEMED ACCURATE. CIRCUMSTANCES VARY, AND RECOMMENDATIONS SHOULD BE REVIEWED ON-SITE BY QUALIFIED PERSONNEL. PLEASE CALL YOUR PUR-O-ZONE REPRESENTATIVE FOR FREE CONSULTATION.

PUR-O-ZONE

YOUR ORGANIZATION HAS SOME LEVEL OF PANDEMIC PLANNING RANGING FROM “NOT ON THE RADAR” TO DETAILED DOCS.

FACILITY MAINTENANCE DEPARTMENTS CAN REDUCE PANIC BY INCREASING KNOWLEDGE AND PREPARATION.

PUR-O-ZONE

PANDEMICS ARE **DISEASE OUTBREAKS**
COVERING COUNTRIES, CONTINENTS
OR AT TIMES, THE ENTIRE GLOBE.

PANDEMICS ARE A **NORMAL AND INEVITABLE**
PART OF THE HUMAN EXPERIENCE.

PUR-O-ZONE

WORLD WAR I KILLED **16 MILLION PEOPLE**
FROM JULY 1914 THROUGH NOVEMBER 1918.

INFLUENZA KILLED **50 MILLION PEOPLE**
IN THE PANDEMIC OF 1918-1919.

ONE OUT OF FIVE PERSONS IN THE WORLD
WAS INFECTED.



PUR-O-ZONE

THE SAME **CLEANING FOR HEALTH** PRINCIPLES
THAT HELP REDUCE PANDEMIC THREATS
IN SCHOOLS & WORKPLACES HAVE BENEFITS
EVERY DAY OF THE YEAR.



PUR-O-ZONE

**WITH PLANNING, KNOWLEDGE, & EXECUTION,
JANITORS CAN PLAY IMPORTANT ROLES
IN REDUCING PANDEMIC THREATS
EFFECTIVELY & SAFELY.**



PUR-O-ZONE

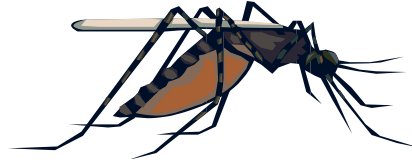
TO REDUCE DISEASE TRANSMISSION; FIRST UNDERSTAND THE “INFECTION CYCLE”

1

LIVING HOST EXAMPLE:

Mosquito = “**Vector**”

Disease = Malaria



DURING THE CREATION OF THE PANAMA CANAL, IT WAS SHOWN THAT MOSQUITOS CARRIED MALARIA BETWEEN HOSTS. THE MOSQUITO IS A “**VECTOR.**” A LIVING VESSEL THAT CARRIES CERTAIN DISEASES FROM HOST TO HOST.

PEOPLE ARE VECTORS. ANIMALS ARE VECTORS FOR SOME DISEASES.

PUR-O-ZONE

TO REDUCE DISEASE TRANSMISSION; FIRST UNDERSTAND THE “INFECTION CYCLE”

2

OBJECTS CAN ALSO HARBOR & THEN TRANSFER DISEASE.



**INANIMATE OBJECT
EXAMPLES:**

Sheets, uniforms, towels,
sinks, handles, knobs,
bed rails, curtains =
“Fomite” or “Touchpoint”

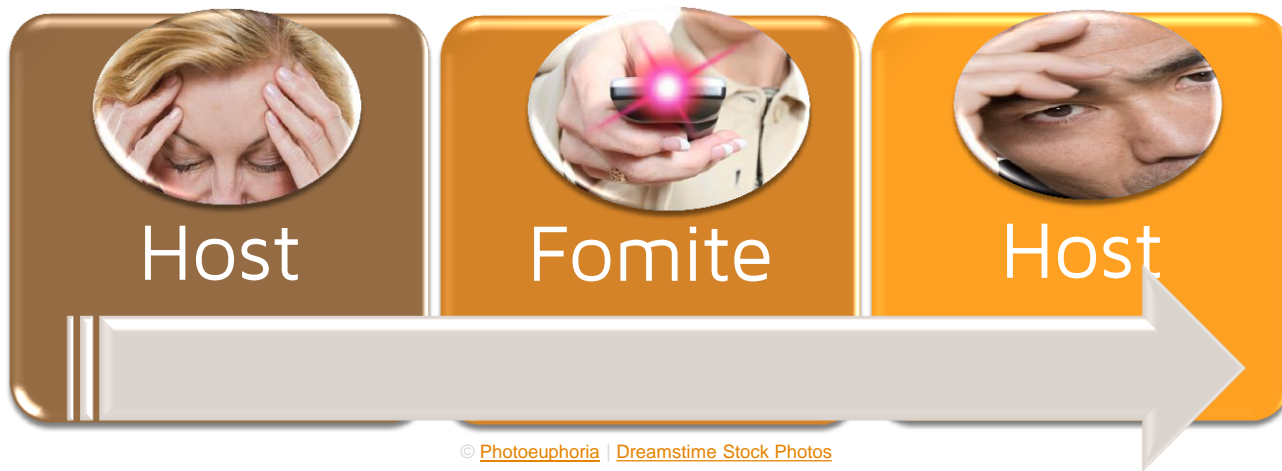
Disease Examples =
MRSA, influenza, Ebola

PUR-O-ZONE



FOMITE (TOUCHPOINT)

A fomite is an object that facilitates the transfer of disease from one human host to a new one.



TOUCHPOINTS ARE THE PLACES EVERYONE HAS THEIR HANDS ON.



COMMON TOUCHPOINTS THAT REVEAL HIGH LEVELS OF CONTAMINATION



MICE



KEY-BOARD



PHONE



BREAK ROOM SINK



MICRO-WAVE



REFR. DOOR



WATER FOUNTAIN



VEND MACH.



CROSS-CONTAMINATION

Cross-contamination is the process of infectious microorganisms being moved from a host to a fomite and picked up again by a new host.



PUR-O-ZONE

CROSS-CONTAMINATION CYCLE
EXAMPLE



Infected Individual

Hands, Body Fluids or Open Wound

Portal of Entry



Hands or Skin

Fomite (Basketball)

INFECTION USUALLY INVOLVES ONE OF THESE PATHWAYS:



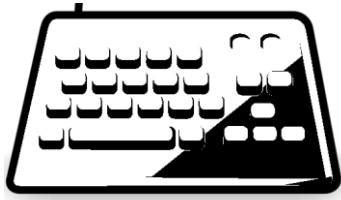
1

- **DIRECT HOST-TO HOST CONTACT** –
Touching, body fluid contact



2

- **AEROSOL TRANSPORT** –
Coughs, Sneezes, Mists

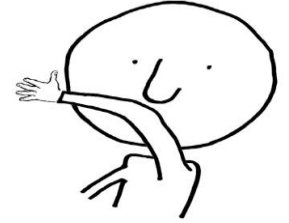


3

- **CROSS-CONTAMINATION** –
Fomites/Touchpoints

REDUCTION OF ILLNESS SPREAD

COVER YOUR
COUGH!



1 DIRECT HOST-TO HOST CONTACT

Reduce with behavior modification, social distancing (at peak) and education.*

2 AEROSOL TRANSPORT

Reduce with respiratory masks, personal protective equipment and prevention etiquette.

PUR-O-ZONE

***“SOCIAL DISTANCING” INVOLVES STRATEGIES LIKE LEAVING OPEN CHAIRS BETWEEN EACH MEETING PARTICIPANT OR SPACING DESKS OUT ACROSS THE ENTIRE FACILITY.**

IT MAY INVOLVE CANCELING MEETINGS ALTOGETHER OR COMMUNICATING MORE BY ELECTRONIC MEANS - OR BOTH.

PREVENTION OF ILLNESS SPREAD

3

CROSS-CONTAMINATION

You can have the greatest impact on disease transmission in a facility by applying the principle of

***INTERRUPTING THE
CROSS-CONTAMINATION CYCLE.***

PUR-O-ZONE

10 KNOWLEDGE-BASED STEPS TO TAKE THAT CAN MAKE THE DIFFERENCE BETWEEN PANIC AND PRODUCTIVITY



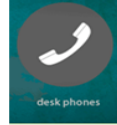
DON'T PANIC IN A PANDEMIC

- 1 - List your most important cross-contamination points
- 2 - Automate or eliminate handles where possible
- 3 - Disinfect your most significant other touch points
- 4 - Clean shared equipment and mats often
- 5 - Increase hand-hygiene opportunities
- 6 - Promote disease-prevention etiquette
- 7 - Incorporate no-touch cleaning
- 8 - Utilize personal-protective equipment
- 9 - Utilize residual disinfectants for spot application
- 10 - Stockpile 6 weeks of essential supplies



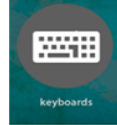
vending machine buttons

**VEND
BUTTONS**



desk phones

**TELEPHONE
SETS**



keyboards

**COMPUTER
KEYS**



microwave door handles

**MICROWAVE
HANDLES**

PREVENTION IS CHEAPER THAN CURE

Copyright 2009-2014, PUR-O-ZONE, Inc.

PUR-O-ZONE

EXAMPLE FOMITES/TOUCHPOINTS

Handles

Sinks

Toilet seats

Bar soap

Desks, counters

Phones, keyboards

Pens, pencils

Surgical tools

Wrestling mats

Shower towels

Microwave handle

Cafeteria tables

Counters

Door knobs

Chair arms

Toys

WHAT IS GROWING WHERE?

Fomite	Bacteria per square inch*
Bus seat	17
Bus door handle	5
Desk top	29
Hall water fountain spigot	60,710
Hall water fountain press bar	5,678
Exercise roller (gym)	12
Exercise mat	121
Basketball	8,065
Computer keyboard	179
Restroom sink handles	90

Fomite	Bacteria per square inch*
Lunch tray support counter	122
Cashier key pad	170
Toilet seat	34
Toilet handle	47
Book bag handle	2
Student's hand	26
Lunch table	17
Lunch tray (before use)	1
Pencil	2
Tape recorder controls	201

*All counts from swab tests and grow-outs by National Sanitation Foundation International.

PUR-O-ZONE

THE PATHOGENS MUST ENTER THE BODY THROUGH A “PORTAL” IN SUFFICIENT QUANTITIES

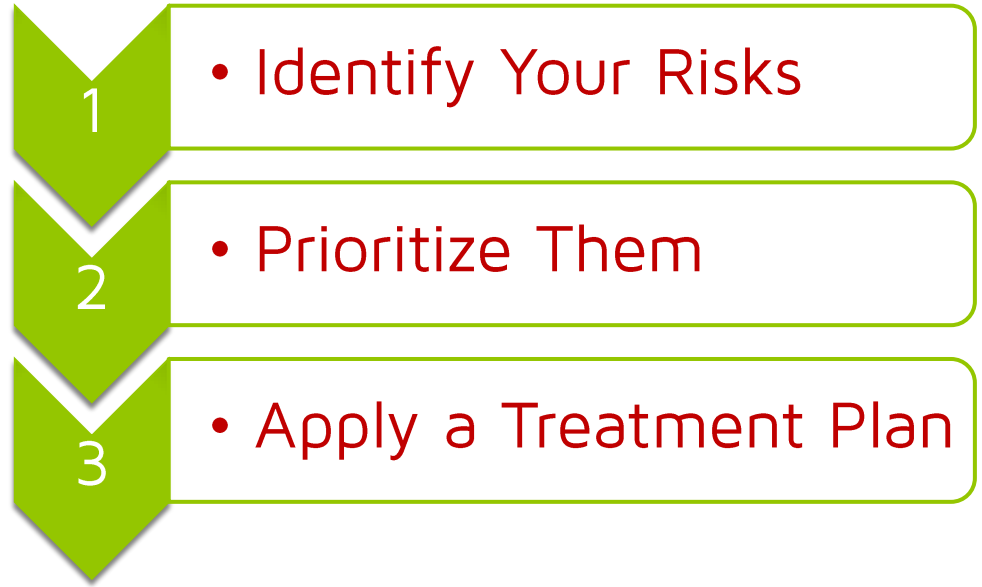
Results of Infection



“Portals of Entry”

- Scrapes
- Cuts
- Abrasions
- Wounds
- Eyes
- Nose
- Other mucous membranes
- Surgical incisions
- Mouth
- Lungs
- Chapped skin (viruses)

PUR-O-ZONE



TREATING FOMITES/TOUCHPOINTS

Fomite/Touchpoint Type

ANIMATE

Body Parts, Fluids and Aerosols

- Skin
- Hands
- Blood, wounds
- Bandages
- Sneezes, coughs

INANIMATE

Handles

- Door handles
- Dispenser handles
- Sink handles
- Flush handles
- Feminine hygiene receptacles

Common Touchpoints

- Wrestling mats
- Counters
- Desks
- Toilets
- Sinks
- Keyboards
- Phones

Laundry & Foodservice

- Bedding
- Gym towels
- Uniforms and personal clothing
- Table rags, mops
- Silverware
- Plates, pots and pans

Body Fluids

- Skin
- Hands
- Blood
- Draining Wounds
- Bandages
- Coughs
- Sneezes



Wash your hands thoroughly and often after contact and during the day. Recite the alphabet before finishing.

Use hand sanitizer at desks, class or office entrances, entrances to the facility, fountains, and breakrooms.

Use hand sanitizer wipes during or after contact sports. Shower afterwards. Wipe gym equipment before and after use.

Do not touch wounds, cuts, abrasions or bandages, towels or clothing. Do not share razors or toothbrushes.

Sneeze/cough into a tissue or the "crook" of your elbow. Use N-95 face masks in times of respiratory/aerosol pandemic.

PUR-O-ZONE

Handles/Lids

- Door handles
- Dispenser handles
- Sink handles
- Flush handles
- Feminine hygiene receptacles



Consider soap and towel dispensers that eliminate handles, or push bars with silver-ion technology.

Eliminate flush handles and sink handles by replacing them with automation devices.

Replace standard feminine hygiene receptacles with touch-free designs.

Open the restroom exit door with a towel, then toss towel in a container near the door.

Clean door and other handles regularly with a disinfecting product labeled with correct efficacy. Observe dwell times.

Common Touchpoints

- Wrestling mats •
- Counters •
- Desks •
- Toilets •
- Sinks •
- Keyboards •
- Phones •
- Exercise machines •
- Toys •
- Play equipment •
- Changing tables •

Remove biofilms and soils from dirty common-contact surfaces with an effective cleaner and High Flow Fluid Extraction.

Treat food-contact surfaces like lunch tables and counters with a product EPA-registered and USDA approved

Consider spray-on application of a surface protectant like Bioshield 75 or Sani Shield. Consider residual disinfection products like Critical Care.

Disinfect phones and keyboards with a product that will not harm circuitry or plastics.

PUR-O-ZONE

Laundry & Foodservice

- Bedding
- Gym towels
- Uniforms
- Table wipers
- Silverware
- Plates
- Utensils
- Food Trays



Plates and utensils - 180-degree rinse for 10 seconds so surfaces reach 160 degrees to sanitize.

Laundry - At least one cycle that uses 160-degree water.

Laundry - Immersion in a 50ppm chlorine solution or 200ppm quaternary solution for 10 seconds.

Products for sanitizing laundry and food service items are available for high-risk situations.

Protect staff with gloves and aprons from uniforms, towels, other used laundry and silverware.

PUR-O-ZONE



Treat **any body fluid**
as if it were labeled

DANGER

PUR-O-ZONE

PUR-O-ZONE

UTILIZE **KNOWLEDGE AND PLANNING**
TO DEFEAT FEAR AND MISUNDERSTANDING.

JANITORS AND CUSTODIANS
ARE ON THE FRONT LINES
OF **PROTECTING WORKPLACE HEALTH.**

PUR-O-ZONE



800-727-7876

WE ARE ALWAYS HERE
TO HELP YOU CLEAN BETTER.

PANDEMIC
POZ
PLANNING



WE ARE ALWAYS HERE
TO HELP YOU CLEAN BETTER.